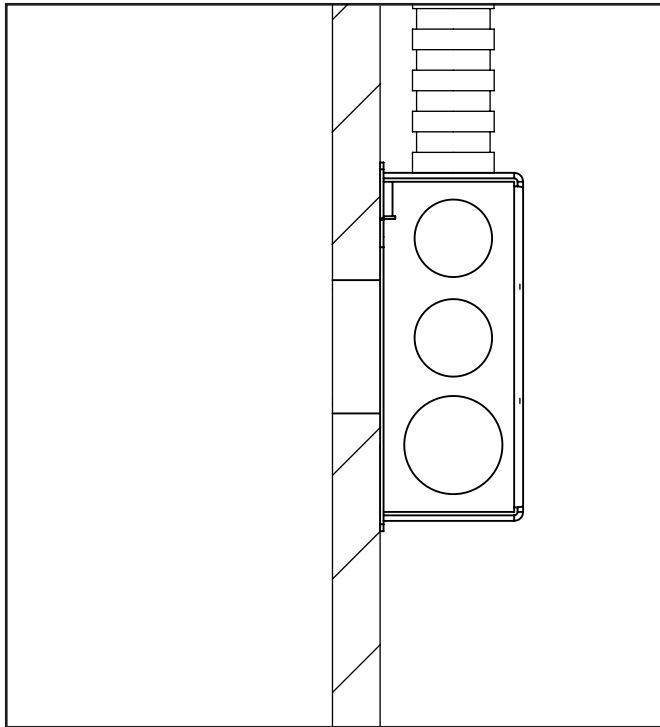


Installation Instructions- Conduit Box

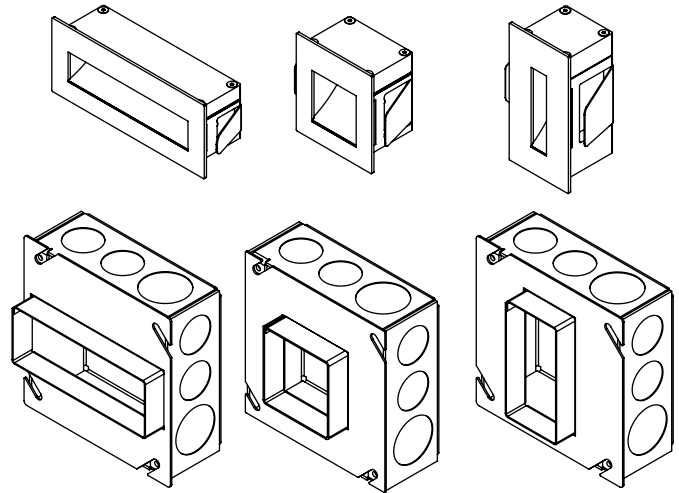
For InWall IW4080, IW50 and IW1043



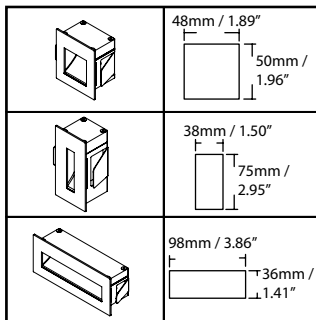
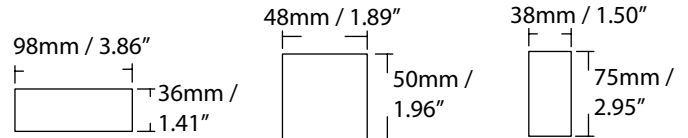
MAINS POWER TO BE SWITCHED OFF DURING INSTALLATION.



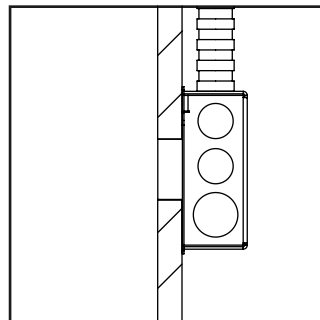
Mounting box with mud-in kit.



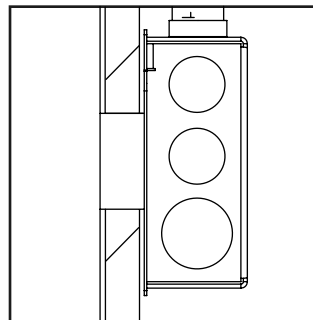
Cut-Out Sizes:



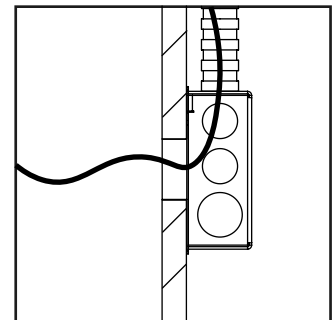
1. Drywall cut-out sizes



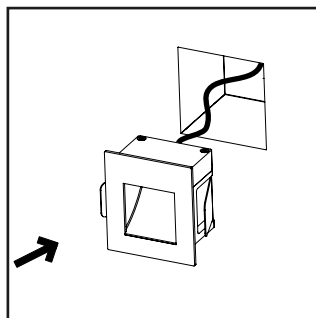
2. Prepare cut-out for mud-in Kit. Secure conduit box behind drywall and connect conduit.



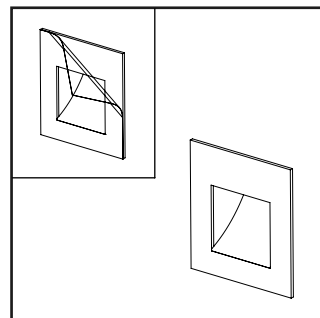
3. Mud-in kit can either be mounted flush with the drywall or set forward for plastering.



4. Run cable through conduit box and conduit. Connection can be made inside box with approved UL connector if necessary.



5. Push InWall product into the Mud-in kit. It should sit flat against the wall.



6. Remove protective film before use.

NOTE:

- Conduit must be provided as per NEC/CEC requirements.
- Ensure opening of mud-in kit is clear from plaster and paint after finishing mounting surface.